

# MXFLEX 60Wp

## 60Wp FLEXible Monocrystalline PV-Module

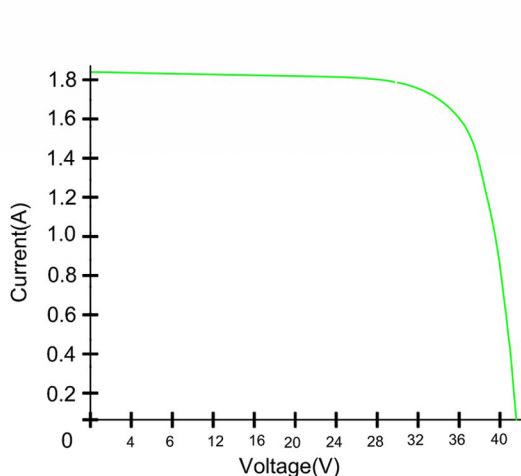
### ELECTRICAL CHARACTERISTICS

Characteristics		Value
Max Power	Pmax	60W
Max Power Voltage	Vmp	17,5V
Max Power Current	Imp	3,43A
Open Circuit Voltage	Voc	21,0V
Short Circuit Voltage	Isc	3,84A
Maximul System Voltage		600V
Series Fuse Rating		10A
Cell Efficiency		19.6%
Number of Cells in Series		60 Cells
Max Power Tolerance		+/-5%

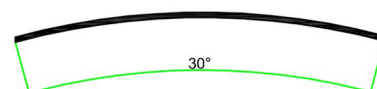
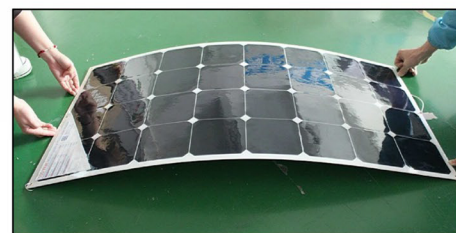
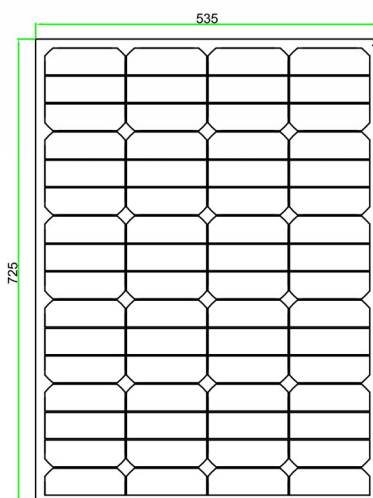
Temperature Co-efficients	Value
Power	-0,38%/°C
Voltage	-60.8mV/°C
Current	2.23mA/°C

### MECHANICAL CHARACTERISTICS

Characteristics	Value
Weight	1,3 Kg
Dimension	725 x 535 x 3 mm



Note: All electrical parameters are rated at standard test conditions (irradiance of 1000W/m<sup>2</sup>, AM 1.5G, cell temperature 77°F/25°C)



Maximum recommended bending degree: 30 degree