

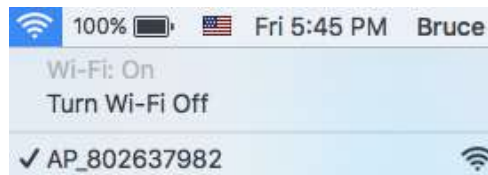
## WiFi intégré Module

*Guide rapide*



**S-W300**

Étape 1 Connectez votre ordinateur portable / téléphone intelligent à notre module Wi-Fi SOFAR. (AP\_xxxxxxxxx);



Étape 2 Aller à 10.10.100.254 en utilisant le navigateur Web et connectez-vous

(Nom d'utilisateur / mot de passe par défaut: admin / admin);



## Étape 3

(B) Dans l'interface d'état du module WiFi, vous pouvez afficher des informations générales du module.

Ensuite, s'il vous plaît suivre la **sorcier** Pour lancer la configuration rapide.

中文 | English

| Status        |  |
|---------------|--|
| <b>Wizard</b> |  |
| Wireless      |  |
| Advanced      |  |
| Upgrade       |  |
| Restart       |  |
| Reset         |  |

**- Inverter information**

Inverter serial number ---

Firmware version (main) ---

Firmware version (slave) ---

Inverter model ---

Rated power --- W

**Current power** --- W

**Yield today** --- kWh

**Total yield** --- kWh

**Alerts** ---

**Last updated** ---

**+ Device information**

**+ Remote server information**

**Help**

The device can be used as a wireless access point (AP mode) to facilitate users to configure the device, or it can also be used as a wireless information terminal (STA mode) to connect the remote server via wireless router.

**Status of remote server**

◆Not connected:  
Connection to server failed last time.  
If under such status, please check the issues as follows:  
(1) check the device information to see whether IP address is obtained or not;  
(2) check if the router is

Web Ver:1.0.13

ou Cliquer sur **Sorcier**.

中文 | English

Status  
**Wizard**  
Wireless  
Advanced  
Upgrade  
Restart  
Reset

**Dear user:**

Thank you for choosing our device.  
Next, you can follow the setup wizard to complete the network setting step by step;  
or you can select the left menu for detailed setting.

★Note: Before setting, please make sure that your wireless network is working.

**Start**

1 2 3 4 5 6

**Help**

The setup wizard will assist you to complete the device setting within one minute.

Web Ver:1.0.13

2 après e configuration nter sorcier interface, cliquez sur Début.

Status  
**Wizard**  
Wireless  
Advanced  
Upgrade  
Restart  
Reset

**Please select your current wireless network:**

Site Survey

| SSID   | BSSID             | RSSI | Channel |
|--|-------------------|------|---------|
| <input type="radio"/> Reco010000843            | AC:CF:23:27:E2:51 | 66   | 1       |
| <input checked="" type="radio"/> yingzhenlink  | EC:6C:9F:4:B3:2C  | 90   | 1       |
| <input type="radio"/> AP_123                   | AC:CF:23:3C:8C:BB | 52   | 2       |
| <input type="radio"/> yingzhenTP               | C0:61:18:51:19:46 | 100  | 2       |
| <input type="radio"/> Reco010001856            | AC:CF:23:27:E3:5  | 72   | 2       |
| <input type="radio"/> AP_607131524             | AC:CF:23:13:C1:40 | 64   | 2       |
| <input type="radio"/> ChinaNet-SFVe            | C:4C:39:10:65:C9  | 54   | 6       |
| <input type="radio"/> iTV-SFVe                 | 5A:4C:39:10:65:CA | 54   | 6       |
| <input type="radio"/> belkin.e16@#\$%^&*()_+~! | EC:1A:59:A4:E:16  | 84   | 6       |
| <input type="radio"/> AP_608903987             | AC:CF:23:15:BC:7C | 88   | 6       |

★Note: When RSSI of the selected WiFi network is lower than 15%, the connection may be unstable, please select other available network or shorten the distance between the device and router.

**Refresh**

**Add wireless network manually:**

Network name (SSID)  
(Note: case sensitive)

Encryption method

Encryption algorithm

**Help**

This step will help to connect the device to your desired WLAN. If you do not find your wireless router on the left list, please refresh several times or add it manually.

Please check your wireless router for the right encryption method and encryption algorithm.

3 Cliquez sur **Rafraîchir** pour rechercher les réseaux sans fil disponibles, vous pouvez également ajouter manuellement un réseau sans fil.

Status

**Wizard**

Wireless

Advanced

Upgrade

Restart

Reset

**Please select your current wireless network:**

|  |                   |    |    |
|--|-------------------|----|----|
| <input type="radio"/> ReLU0100000643           | AC:CF:23:27:E3:51 | 49 | 1  |
| <input type="radio"/> AP_123                   | AC:CF:23:3C:8C:BB | 57 | 2  |
| <input type="radio"/> Reco010001856            | AC:CF:23:27:E3:5  | 74 | 2  |
| <input checked="" type="radio"/> yingzhenlink  | EC:6C:9F:4:B3:2C  | 96 | 1  |
| <input type="radio"/> NETGEAR35                | BC:D1:77:E5:38:4E | 42 | 6  |
| <input type="radio"/> ChinaNet-SFVe            | C:4C:39:10:65:C9  | 66 | 6  |
| <input type="radio"/> ITV-SFVe                 | 5A:4C:39:10:65:CA | 66 | 6  |
| <input type="radio"/> AP_608903987             | AC:CF:23:15:BC:7C | 78 | 6  |
| <input type="radio"/> belkin.e16@#\$%^&*()_+~! | EC:1A:69:A4:E:16  | 82 | 6  |
| <input type="radio"/> RECO_TEST                | A0:F3:C1AC:26:5C  | 49 | 10 |
| <input type="radio"/> Reco_12481248            | AC:CF:23:21:5C:83 | 28 | 10 |
| <input type="radio"/> Reco010001898            | AC:CF:23:27:B6:8F | 49 | 10 |
| <input type="radio"/> Reco010000002            | AC:CF:23:23:1E:E7 | 30 | 10 |

★Note: When RSSI of the selected WiFi network is lower than 15%, the connection may be unstable, please select other available network or shorten the distance between the device and router.

**Refresh**

**Add wireless network manually:**

Network name (SSID)  
(Note: case sensitive)

Encryption method WPA2PSK

Encryption algorithm AES

**Help**

This step will help to connect the device to your desired WLAN. If you do not find your wireless router on the left list, please refresh several times or add it manually.

Please check your wireless router for the right encryption method and encryption algorithm.

☞ Choisissez le réseau auquel vous souhaitez vous connecter, cliquez sur **Prochain**.

**Remarque:** 1. Si votre réseau sans fil connecté désiré est disponible, s'il vous plaît cliquez sur Rafraîchir pour elle une nouvelle recherche.

2. Si l'intensité du signal (RSSI) du réseau sélectionné est inférieure à 15%, ce qui signifie une connexion instable, s'il vous plaît ajuster l'antenne du routeur, ou d'utiliser un répéteur pour améliorer le signal.

Status

**Wizard**

Wireless

Advanced

Upgrade

Restart

Reset

**Please enter the wireless network password:**

Password (8-64 bytes)  
(Note: case sensitive)
 

●●●●●●●●

Re-enter password
 

●●●●●●●●

☐ Show Password

Back **Next**

123456

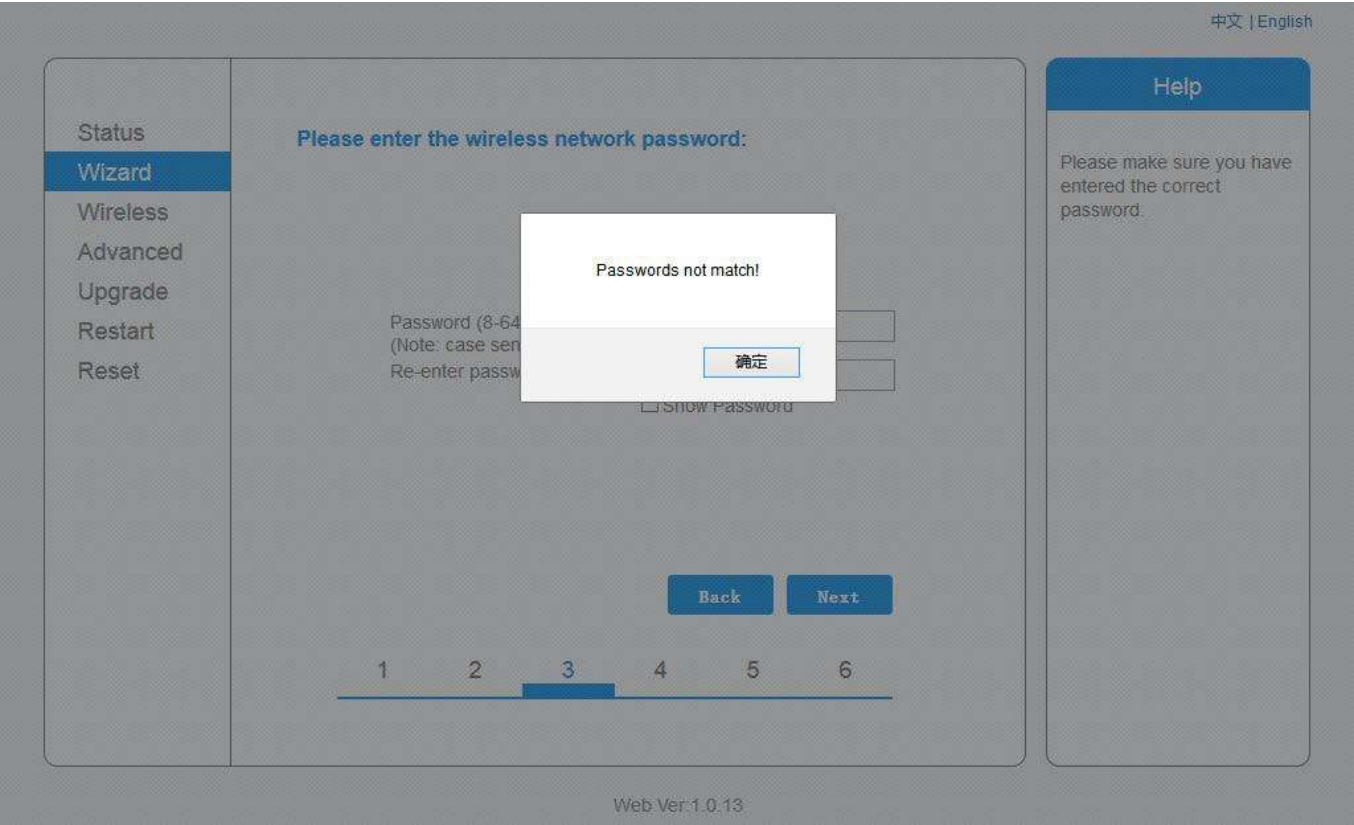
**Help**

Please make sure you have entered the correct password.

Web Ver:1.0.13

☞ Tapez le mot de passe pour se connecter au réseau, cliquez sur **Prochain**.

Remarque: S'il vous plaît attendre un moment au cours du processus d'authentification par mot de passe. Si le mot de passe ne correspond pas, la boîte de message suivant apparaîtra.





中文 | English

Status

**Wizard**

Wireless

Advanced

Upgrade

Restart

Reset

**Please fill in the following information:**

Obtain an IP address automatically Enable ▾

IP address

Subnet mask

Gateway address

DNS server address

Next
Back

1   2   3   **4**   5   6

**Help**

Most systems support the function of DHCP to obtain IP address automatically. Please select disable and add it manually if your router does not support such function.

Web Ver:1.0.13

☞ Sélectionner **Activer** pour activer la fonction d'obtenir automatiquement l'adresse IP, cliquez sur **Prochain**.

La plupart des systèmes prennent en charge DHCP obtenir automatiquement la fonction d'adresse IP. Si votre routeur ne prend pas en charge, s'il vous plaît sélectionnez Désactiver et entrée manuellement.

中文 | English

Status

**Wizard**

Wireless

Advanced

Upgrade

Restart

Reset

**Setting complete!**

Click OK, the settings will take effect and the system will restart immediately.

If you leave this interface without clicking OK, the settings will be ineffective.

OK
Back

1   2   3   4   5   **6**

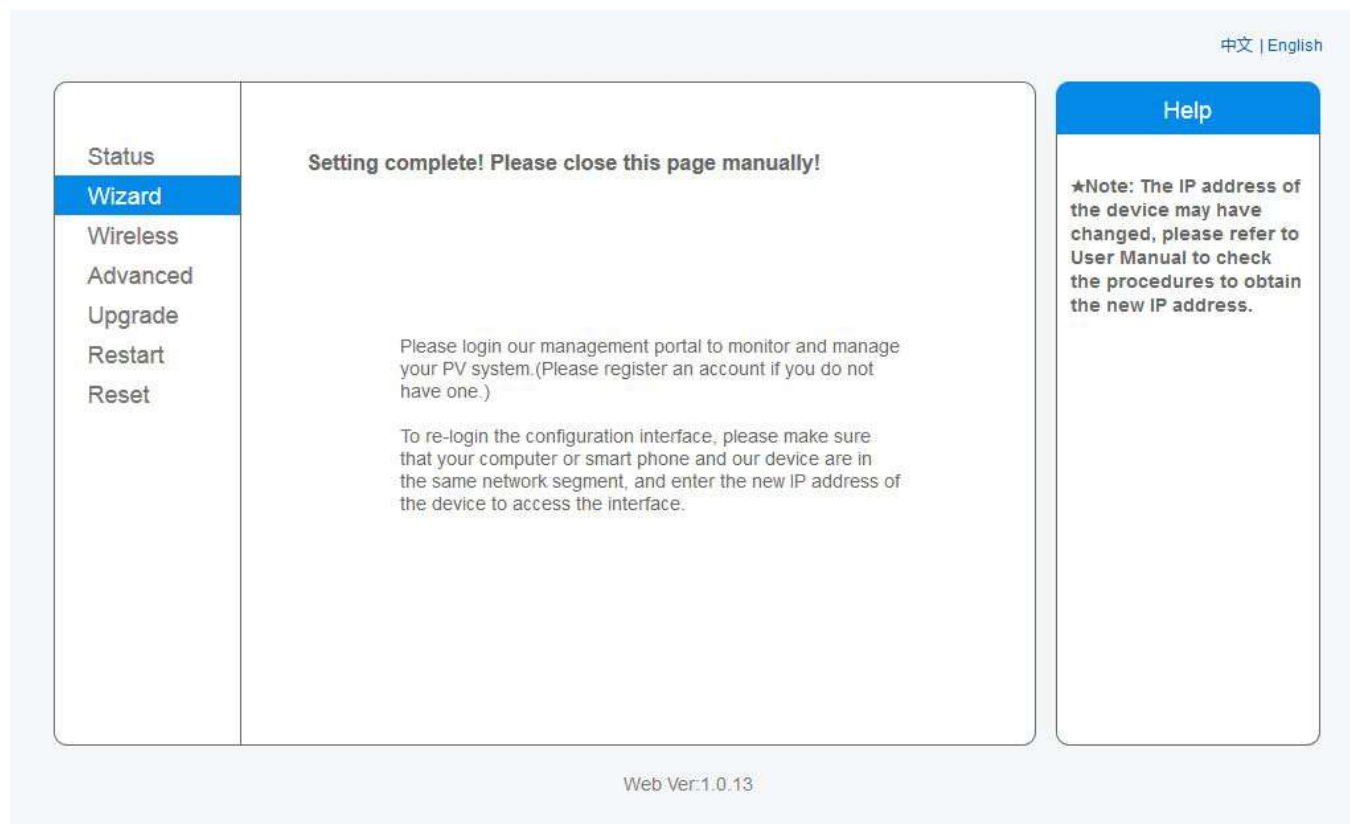
**Help**

After clicking OK, the system will restart immediately.

Web Ver:1.0.13

☞ Si mise en place réussit, l'interface ci-dessus affichera, et cliquez sur **D'accord** au module redémarrer.

**Remarque :** Cliquez sur **D'ACCORD**, le système redémarrera immédiatement. Redémarrer prendra environ 30 s.



☞ Si le redémarrage est une interface réussie, au-dessus montrera.

**Remarque :** Le dispositif peut changer l'adresse IP. Reportez-vous au manuel d'utilisateur de vérifier comment trouver l'adresse IP ..



中文 | English

**Status**  
 Wizard  
 Wireless  
 Advanced  
 Upgrade  
 Restart  
 Reset

**+ Inverter information**

**- Device information**

|                      |                   |
|----------------------|-------------------|
| Device serial number | 703285115         |
| Firmware version     | 1.0.05a_0601_1.02 |
| Wireless AP mode     | <b>Enable</b>     |
| SSID                 | AP_703285115      |
| IP address           | 10.10.100.254     |
| MAC address          | ACCF233C9381      |
| Wireless STA mode    | <b>Enable</b>     |
| Router SSID          | yingzhenlink      |
| Signal Quality       | 90%               |
| IP address           | 192.168.2.177     |
| MAC address          | ACCF233C9380      |

**+ Remote server information**

**Help**

The device can be used as a wireless access point (AP mode) to facilitate users to configure the device, or it can also be used as a wireless information terminal (STA mode) to connect the remote server via wireless router.

**Status of remote server**

◆ Not connected: Connection to server failed last time. If under such status, please check the issues as follows:  
 (1) check the device information to see whether IP address is obtained or not;  
 (2) check if the router is connected to internet or

Web Ver:1.0.13

**Remarque :** Si l'adresse IP est 0.0.0.0, signifie que la configuration a échoué, s'il vous plaît redémarrer la configuration.

Étape 4 cliquez sur « Avancé » -> « Mode de travail » -> Sélectionnez « SOFAR » -> cliquez sur « Enregistrer »

The screenshot shows the 'Working mode' configuration page. On the left is a sidebar menu with options: Status, Wizard, Wireless, Cable, **Advanced** (highlighted with a red box), Working mode, Remote server, Port setting, Access point, Upgrade, Restart, and Reset. The main area is titled 'Working mode' and contains two dropdown menus: 'Working mode:' set to 'Data collection' and 'Inverter supported:' set to **SOFAR** (highlighted with a red box). A blue 'Save' button (also highlighted with a red box) is located below these settings. On the right, a 'Help' section provides instructions: 'The device usually works under data collection mode. You can select transparency mode if your device supports such function.' It also notes that in transparency mode, the device communicates directly with a remote computer. A star-note states: '★Note: After changing the settings, the device must be restarted.' and advises to re-login after restart.

Réglage WiFi terminé